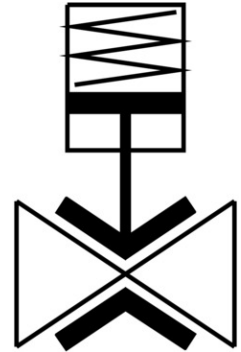


Pinch valve

VZQA-C-M22C-6-TT-V2V4E-4

Part number: 4748311

FESTO



Data sheet

| Feature | Value |
|--------------------------------|---|
| Type code | VZQA |
| Structural design | Pinch valve, pneumatically operated |
| Actuation type | Pneumatic |
| Sealing principle | Soft |
| Mounting position | Any |
| Type of mounting | Line installation |
| Fitting connection | 1/4 NPT |
| Nominal width DN | 6 |
| Valve function | 2/2, closed, monostable |
| Flow direction | Reversible |
| Medium pressure | 0 MPa ... 0.4 MPa |
| Medium pressure | 0 bar ... 4 bar |
| Medium pressure | 0 psi ... 58 psi |
| Operating pressure | 0.34 MPa ... 0.6 MPa |
| Operating pressure | 3.5 bar ... 6 bar |
| Operating pressure | 49.3 psi ... 87 psi |
| Nominal pressure of fitting PN | 10 |
| Burst pressure | 1.6 MPa |
| Burst pressure | 16 bar |
| Burst pressure | 232 psi |
| Reset method | Mechanical spring |
| Type of control | Externally controlled |
| Auxiliary pilot air port 12 | M3 |
| Pilot medium | Compressed air as per ISO 8573-1:2010 [7:4:1] |
| Symbol | 00992981 |
| Medium | Compressed air as per ISO 8573-1:2010 [:-:1] Water |
| Max. viscosity | 4000 mm ² /s |
| Temperature of medium | -5 °C ... 100 °C |
| Ambient temperature | -5 °C ... 60 °C |
| Storage temperature | 6 °C ... 8 °C |

| Feature | Value |
|------------------------------|--|
| Flow rate Kv | 0.7 m ³ /h |
| On switching time | 125 ms |
| Switching time off | 125 ms |
| Note on materials | Contains paint-wetting impairment substances RoHS-compliant |
| Housing material | High-alloy stainless steel |
| Material number of housing | 1.4301 |
| Housing cover material | High-alloy stainless steel |
| Material no. housing cover | 1.4435 |
| Seals material | FPM |
| Shut-off element material | EPDM |
| Product weight | 253 g |
| For use in the food industry | See supplementary material information |
| Material of bowl | PPS |